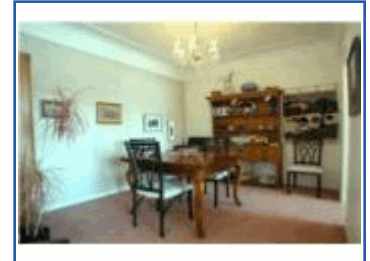
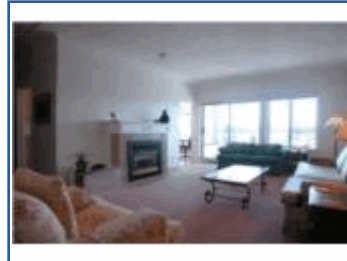


List Price: \$695,000

MLS® 250902

Introducing
202-65 Songhees Rd
Victoria West - Songhees



Status:	Current	Lot Size:	1,369sqft / 0.00ac (est)
Sub Class:	Condo	Built:	1989
Layout:	Condo: One Level	Bsmt. Hght:	0` 0"
Bedrooms:	2	Prk. Spaces:	1
Bathrooms:	2	Mthly Assmt:	\$422
Kitchens:	1	2007 Ass. Val:	\$604,000
Fireplaces:	1	2008 Gr. Tax:	\$3,592
Fin. SqFt:	1,207		
Unfin. SqFt:	163		
Interior Features:	Breakfast Nook, Laundry In-Unit, Sep Dine Room, Whl Chr Access		
Appliances Included:	Dishwasher, F/S/W/D		
Fuel:	Electric, Gas		
Heat:	Baseboard, Gas Fireplace		
Roof:	Tile		
Foundation:	Concrete Poured		
Ext Finish:	Stucco		
Ext Features:	Balcony/Deck, Landscaped, No Step Entrance		
Prk. Type:	Underground - Secure		



Bright and spacious 2 bed, 2 bath condo offers a front row seat in the Songhees to all the excitement Victoria's Inner Harbour has to offer! Magnificent views of the city skyline, Fisherman's Wharf, Olympic Mountains and the ever changing marine scenery. Experience the lifestyle of luxury, convenience and tranquility in the middle of the city! Exceptionally located unit provides a functional floor plan with high ceilings, a large master suite and plenty of storage. Walk to town and all amenities or hop on a harbour ferry right out front of your door.